



HEETON CONCEPT HOTEL

---

PATTAYA · THAILAND



## *ABOUT US*

---

A new universe of unique local experiences awaits you at the Heeton property, where you escape the everyday. Experience a unique and vibrant hotel concept that will leave you feeling inspired.

Heeton Concept Hotel Pattaya has 247 well-appointed guest rooms. We have put a lot of love into the facilities of the pool and entertainment area outside and set it up for entertaining families and holiday makers.

The location of Heeton Concept Hotel Pattaya is on Pattaya 2<sup>nd</sup> Road, not too far from Walking Street without being on top of it, and close to the world premier shopping at Central Festival, and away from the madness of Beach Road.

The family friendly aspect of this Pattaya hotel does not stop at kids. Heeton Concept Hotel Pattaya also welcomes pets on the premises. Bring your 4 legged family members and check them in for only 500 baht per night extra. Rooms may have up to 2 pets that do not exceed the weight limit of 10 kg each.



# ABOUT HOTEL

## *About Hotel*

Heeton Concept Hotel Pattaya has a convenient location for families on holiday or relocating to Pattaya. The family friendly hotel is also pet friendly, with a large Kids club. The hotel has everything that family will need on holiday.



Compass Hospitality



# ROOMS

## *SUPERIOR*

Superior room (28 sqm) with either a king-size bed or two single beds features hair dryer, private balcony, shower, in-room safety deposit box & LED TV with a city or swimming pool view.

Located on 1st – 3rd floor



Compass Hospitality



# ROOMS

## *DELUXE*

Deluxe room (28 sqm) with a king-size bed or two single beds features hair dryer, private balcony, shower, in-room safety deposit box & LED TV with a city or swimming pool view.

Located on 4th-7th floor



Compass Hospitality



# ROOMS

## *CORNER SUITE*

Corner Suite (36 sqm) comes with a king-size bed and sofa bed. Room features tea/coffee set, electric kettle, hair dryer, private balcony, shower, in-room safety deposit box & 32" LED TV with a city or swimming pool view.



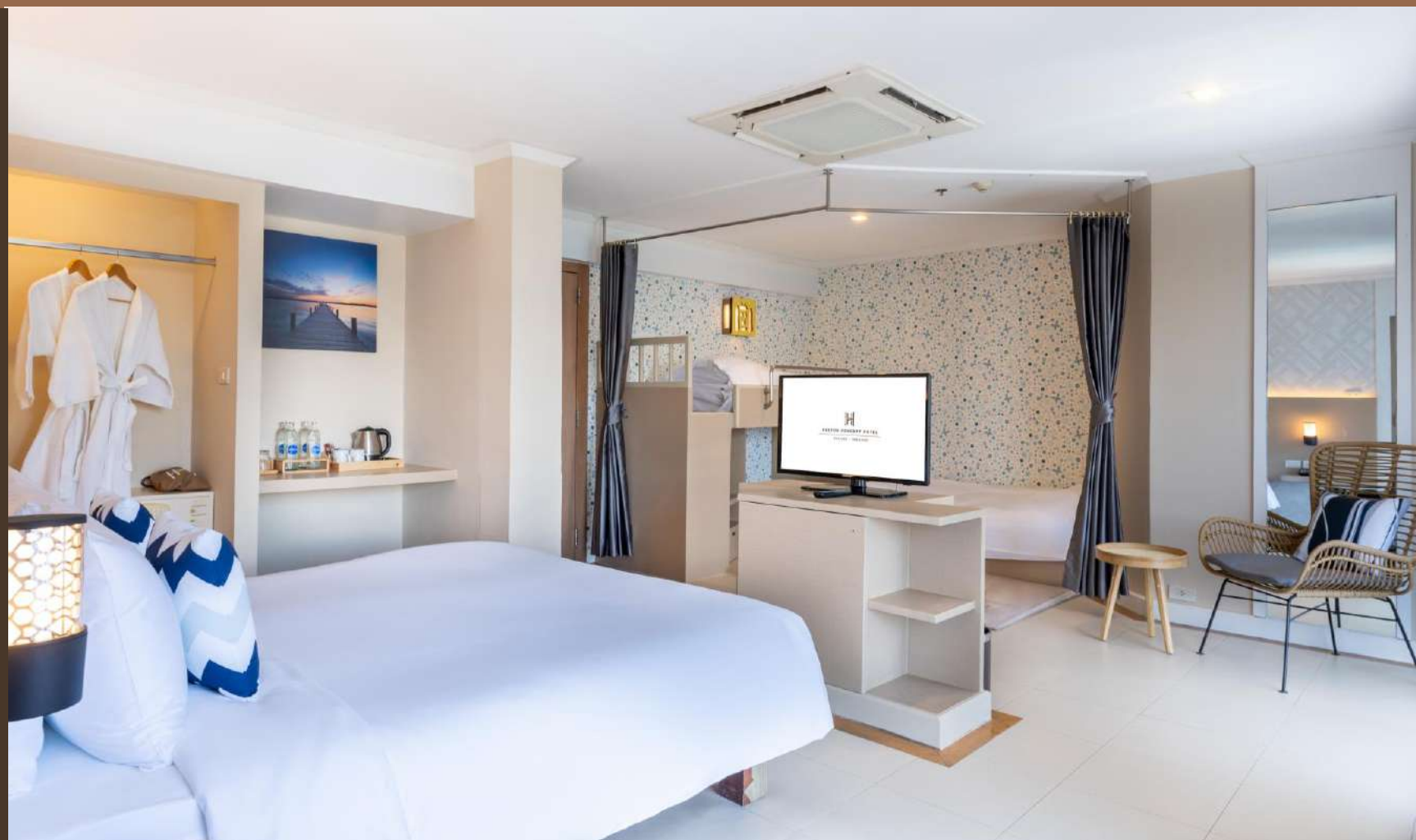
Compass Hospitality



# ROOMS

## *FAMILY SUITE*

Family Suite (32 sqm) come standard with the bunk beds, and kids beds are set up as bunk beds. The bathroom has a bathtub as well. The accommodation suited to families has all the comforts of home right at your fingertips.



Compass Hospitality



# FACILITIES

## *Swimming Pool & Slides*

Immerse yourself in the crystal-clear waters, perfect for leisurely swims and refreshing dips. For the thrill-seekers, our exciting water slides offer an exhilarating journey with twists and turns that promise endless fun for guests of all ages. Whether you're seeking relaxation or adventure, our pool area with water slides provides the ideal blend of enjoyment and tranquility for an unforgettable stay."



Compass Hospitality

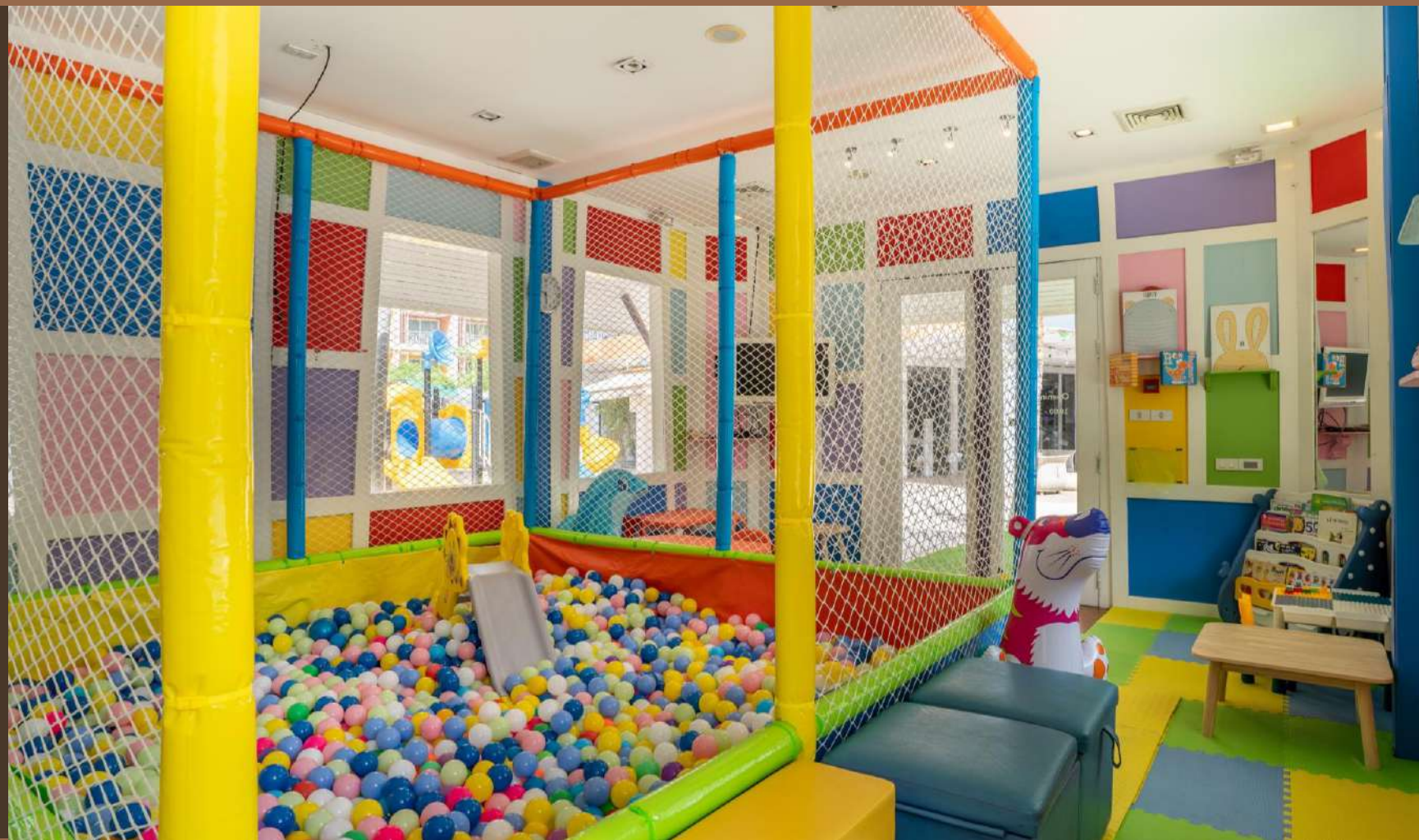




# FACILITIES

## *Kids Club*

Welcome to our vibrant kids' club, where young adventurers can explore endless fun and make unforgettable memories. At our kids' club, laughter echoes and friendships bloom, creating a haven of joy and excitement for our youngest guests.



Compass Hospitality



# DINING

## *H Café*


Indulge your senses at the H Café, our enchanting all-day dining destination designed to elevate your culinary journey. From sunlit breakfasts to savory dinners, our diverse menu showcases a symphony of flavors, prepared with the finest ingredients by our skilled chefs.




Compass Hospitality

# CONTACT US



 484 Moo 10, Soi 15, Pattaya 2<sup>nd</sup> Road, Nongprue, Banglamung, Chonburi 20150

 +66 (0) 38 425 050

 [info@hchpattaya.com](mailto:info@hchpattaya.com)

 [www.heetonpattaya.com](http://www.heetonpattaya.com)

**Unpack.  
Unwind.  
Uncover a space  
For relaxation.**



Compass Hospitality